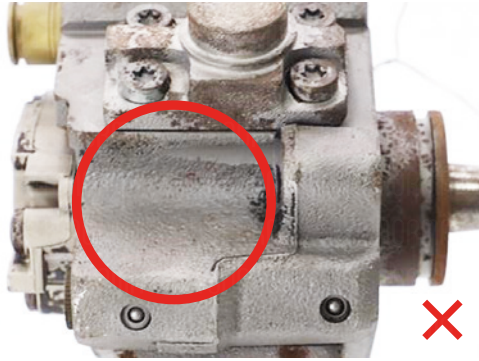


High Pressure Fuel Pump

C – GRADE 100 %
Price reduction:

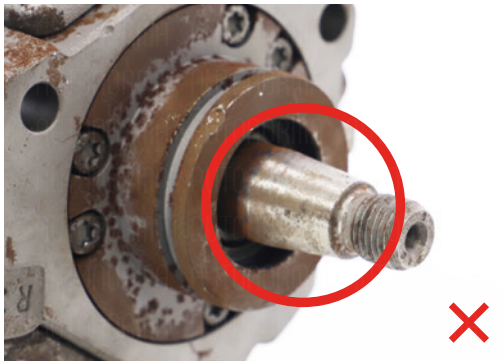
Missing / illegible labeling



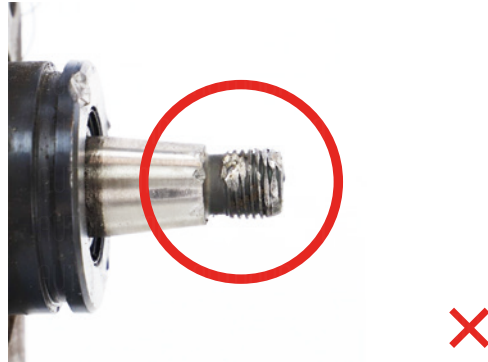
Incomplete part



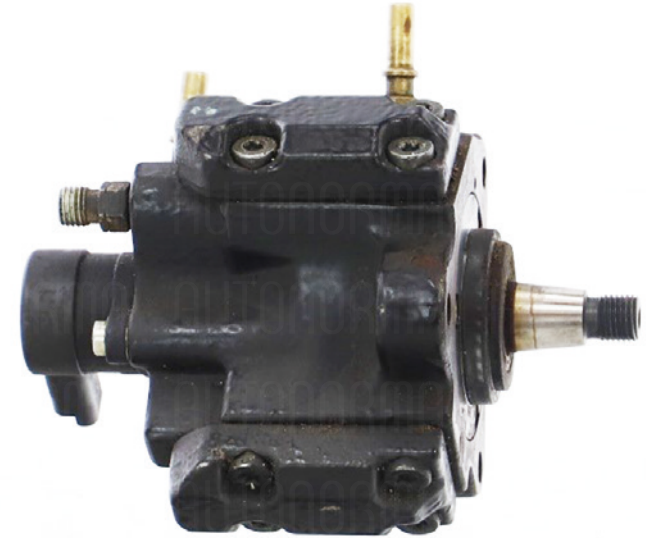
Corrosion at the drive shaft



Damaged drive shaft



High Pressure Fuel Pump



EN

Autonorma company allows its customers to return their old parts for the purpose of deposit refund. After accepting the old part, the customer is either refunded full/reduced deposit or the deposit is forfeited to the company. The conditions for accepting old parts are different for each assortment group and determine whether a particular old part can still be refurbished or not.

Each old part is inspected and evaluated upon receipt according to the conditions specified later in this document. Simply put, old parts are classified into categories **A**, **B**, and **C**. However, there are cases where there are only two categories, and alternatively, more than three. If the part is evaluated as A grade, **no deduction is applied**; in case of B grade, the deposit is **reduced by 50 %**; finally, grade C warrants **full 100 % deduction** on the deposit. Deductions may vary for individual assortment groups.

High Pressure Fuel Pump

A – GRADE 0%
Price reduction:

Undamaged part,
complete without any missing components

Undamaged electrical connector



Undamaged shaft

Fully legible labeling



High Pressure Fuel Pump

B – GRADE 70%
Price reduction:

Damaged fuel supply

Damaged fuel / temperature valve connector

