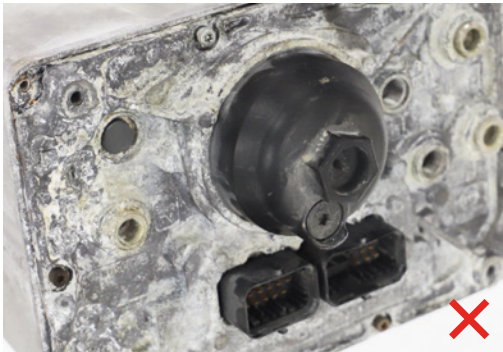


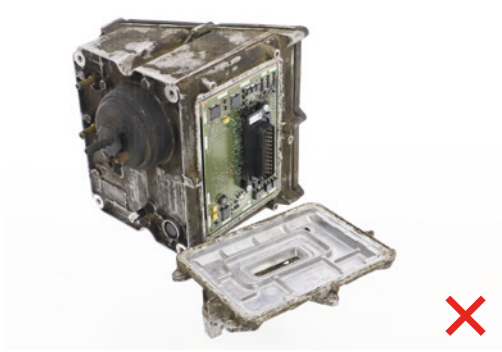
AdBlue Urea Pump

C – GRADE 100 %
Price reduction:

Part damaged by AdBlue urea



Disassembled / incomplete part



AdBlue Urea Pump



EN

Autonorma company allows its customers to return their old parts for the purpose of deposit refund. After accepting the old part, the customer is either refunded full/reduced deposit or the deposit is forfeited to the company. The conditions for accepting old parts are different for each assortment group and determine whether a particular old part can still be refurbished or not.

Each old part is inspected and evaluated upon receipt according to the conditions specified later in this document. Simply put, old parts are classified into categories **A**, **B**, and **C**. However, there are cases where there are only two categories, and alternatively, more than three. If the part is evaluated as A grade, **no deduction is applied**; in case of B grade, the deposit is **reduced by 50 %**; finally, grade C warrants **full 100 % deduction** on the deposit. Deductions may vary for individual assortment groups.

AdBlue Urea Pump

A – GRADE 0 %
Price reduction:

Undamaged part, complete without any missing components



Fully legible labeling



Undamaged electronic connector



AdBlue Urea Pump

C – GRADE 100 %
Price reduction:

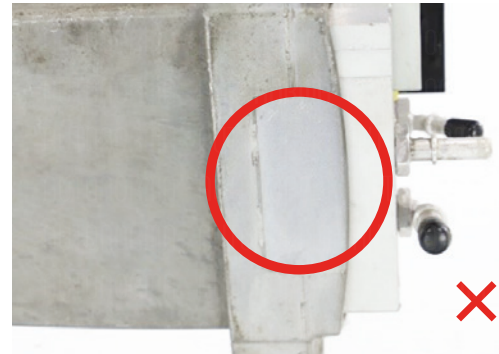
Damaged connector



Damaged connector



Missing / illegible label



Damaged / missing fuel nozzles

